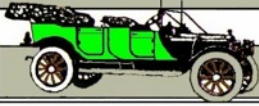




The Touring Club



Eastern Idaho Chapter

October 2011

Volume 13, No. 10



Eastern Idaho's Chapter Officers for Year "2011"

President

Mike Derbidge
Phone: (208) 524-6310
E-mail: desoto34@gmail.com

Vice President:

Gary Schwartzenberger
Phone: (208)523-6384
E-mail: schwartz12@gmail.com

Secretary/Treasurer:

Mark Schwartzenberger
Phone: 208-552-2358
E-mail: efcebia@q.com

Board of Directors:

- Brian Edgerton
Joy Eagle
Sam Otero
Dawn Schwartzenberger

Newsletter Editor:

Ray Born
Phone: (208) 529-9188
E-mail: rrb@srv.net

2012 VMCA EASTERN IDAHO'S MEMBERSHIP DRIVE IS SCHEDULED FOR SATURDAY NOVEMBER 5, 2011 @ 9:30 PM AT THE



Eastern Idaho Chapter of the VMCA (Veteran Motor Car Club of America) invites you to the

2012 Membership Drive Saturday, November 7th, 9:30am - 2pm



Pumpkin Daze Tour

Early November is traditionally the time when the Germans celebrate Pumpkin Days - we will join the fun again this year with our own Pumpkin Daze Tour.

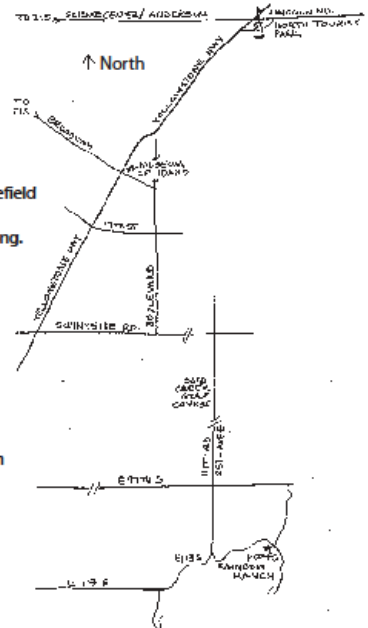
Meet us on Saturday November 5th, 9:30am by the Indian at the corner of Yellowstone Hwy & Lincoln Rd. in IF. We will proceed to the "A Grateful Nation: A Look Back at WWII" at the Museum of Idaho, 200 N. Eastern Ave, IF. This exhibit commemorates the courage of those who fought on the battlefield to defend our freedoms and the commitment of those on the home-front who fought to keep our troops equipped and strong. There is a \$6/person group rate to enter the museum.

At 11:30am we will continue to the Hoff's Rainbow Ranch for car games and lunch. Please bring a side dish and a pumpkin dish for the 2nd annual pumpkin challenge. Hot dogs, drinks, and utensils will be provided by the club.

Pumpkin Side Dish Challenge - if you choose to join the contest, we will have a competition for the best dish that has pumpkin as an ingredient! Last year's winner - Brian Edgerton is ready for all challengers!

This is our yearly Membership Drive event so please be ready to renew your dues - \$37 national and \$10 local. We would also like to invite any prospective members (people that like old cars) to see what our club is about. Please invite a friend!

For more information please contact Joy Eagle @ 529-9450.



Future Events

2011

Oct 8, 2011 : Bonneville Region Annual Meeting, Brigham City, UT @ Maddox Restaurant in Angus Room, 11:30 AM. We have only 2 hours for the meal and the meeting so please be there ready to be seated at 11:30. If you have anything to be brought up at the meeting please contact Region Director very soon to have it on the agenda.

Oct 13, 2011 : Eastern Idaho Chapter Meeting 7:00-9:00 PM @ the South Room of the Idaho Falls Activity Center (the old Armory building) at 1575 North Skyline Dr, Idaho Falls, ID

Nov 5, 2011 : Eastern Idaho's Membership Pumpkin Daze Tour. Come and enjoy The I F Museum WW 11 collection & Hoffs for lunch. Don't forget your Eastern Idaho membership, you can pay your dues at that time if you wish. Joy Eagle

Nov 10, 2011 : Eastern Idaho Chapter Meeting 7:00-9:00 PM @ the South Room of the Idaho Falls



### Assignments/Reminders

**Activities:-**

Oct ? - Mark Swartzenberger  
Nov 5 - Joy Eagle  
Dec- Xmas Party

**Treats:**

Nov - Bud & Janet Cheney  
Dec - Xmas Party

## MEETING HIGHLIGHTS

No Information available

## PRESIDENT'S PICTURES

I have attached a couple of pictures from the Lake Superior Tour. Mike



### Items for Sale or Wanted

1953 Cadalac Sedan, 4D Deville, VIN 536246447, 5 previous owners, 321 V8. No major dents, some rust, engine seized up when distr cap was stolen - spouse put oil in to try to get engine free'd up but hasn't worked on it since. No radio, back seat has no tears, frong seat covers need replacing. Front window is cracked and one side window - originally older Dark Forest Green, now a turquoise blue. May see @ 1651 Whitney Str, IF - Home # 524-8285

Mom and I are selling off a lot of Dad's Model T parts, frames, front axles rear ends, fenders front and rear fenders, hub caps, and hubs & other parts Make offer. We are also selling Dad's 1985 Ford Lariat truck \$800.00 OBO needs a paint job. 1988 Chevy C 20 handicapped equipped Van w/ side access lift has some Auto body damage \$1000.00 or best offer. Thanks, Roy Cole. 522-8543 or dontbugmybuick@hotmail.com

Straight 8 engine (maybe a Buick or Olds or whatever) to put into a 1936 Chevrolet Master Delux. Please contact George Gutzmer, 801-566-2234 or 801-560-4814.

For Sale: 1937 Packard, Model 120C for Sale. 4-dr. Sedan, dark blue, owned for 30 years by present owner. In original older paint condition last driven 4 years ago. Please call Orland Bailey 522-0197

For Sale: 19631/2 Galaxie, White with red interior, 58,000 miles, \$7,000, Contact Ronald Tanner, 356-7567

These cars are absolutely beautiful. You will find lots of photos and detail available on the site.

**Mapes' Classic Cars -**  
<http://www.mapesclassiccars.com/index.html>

Here is the listing of what is still available (located in Nebraska):

- 1932 Plymouth Roadster PB
- 1935 Ford Deluxe Roadster
- 1936 Chrysler C7
- 1937 Buick Roadmaster
- 1941 Buick Super 8
- 1941 Chevy Special Deluxe
- 1941 Lincoln Continental Zephyr
- 1941 Packard 110 Deluxe

ESTATE REDUCTION - AUTOMOBILIA  
(lifelong car enthusiast selling all collections)  
Over 200 automotive Books "coffee-table"

## PRESIDENT'S MESSAGE

### Presidents Message October 2011

We have returned from our Lake Superior Circle Tour. Twenty cars participated in the 1400 mile, six touring day trip around Lake Superior. Lake Superior is the largest fresh water lake in the world by surface area and it is the world's third-largest fresh-water lake by volume. The oldest car was a 1937 Chrysler Airflow and the newest a 1986 Ford F150 pickup. The Cadillac mark was well represented—Five in total. The oldest was a 1960 and the newest was a 1979 Eldorado. This tour was a first for our touring experiences with the old cars. We didn't have a break down or a mishap. Our Cadillac performed flawlessly and on one leg we managed 17 miles per gallon. Our tour traversed the states of Wisconsin, Michigan, Minnesota, and the Canadian province of Ontario. The scenery was outstanding, the weather was perfect, and we made new friends and reestablished memories with car friends from previous tours. We went through the locks at Sault-St. Marie and had brunch on the Lake Superior harbor in Duluth. We visited Fort William, a fur trading post, near Thunder Bay Ontario Canada. We also visited a shipwreck museum on Lake Superior at Whitefish Pointe. The remains of the Edmund Fitzgerald (chronicled in music by Gordon Lightfoot) lay 17 miles North West of the museum. The bell from the Fitzgerald along with other shipwreck pieces resides in the museum. We took over 300 pictures and some of them will appear in a future Bulb Horn article. If you have a chance and can plan the time it would be great to join the Upper Mississippi Region on their next circle tour around Lake Erie in August of 2012. Watch for details in the Bulb Horn. On an additional note, the Bonneville Regional Meeting is October 8, 2011 at Maddox in Brigham City Utah. Please try to attend. These regional meetings are only held annually and your contributions are important.

Mike Derbige



**Future Events Cont.**

Continued from page 1

Activity Center (the old Army building) at 1575 North Skyline Dr, Idaho Falls, ID

Dec. ?, 2011 : Eastern Idaho Chapter Christmas Party. TBD

2012

Feb 9-11, 2012 : VMCCA 74th Annual Membership Meeting and Awards Banquet. Punta Gorda, Florida. Four Points by Sheraton Hotel. VMCCA rate \$ 90 per night, 887-822-1998. Contact Chairs Don & Lee Royston 941-626\*4452, leekr42@embaqmail.com

May 13-17, 2012 : VMCCA National Muscle Car Tour. Branson, MO. Contact Charis Bob & Cathy Taylor, 636-274-3022, hippo1941@cs.com

Jun 21-25, 2012 : VMCCA National Chrome Glidden Tour. Billings, MT. Contact Greg & Deb Childs, 406-628-2345

**Items for Sale or Wanted Cont.**

Continued from page 2

items, history, museums, design, racing, etc.  
Over 100 items automotive Art from posters and photos to fine framed artwork, plaques, etc.  
All sorts of automotive Toys from antique and vintage toy cars to die cast models, games, etc.  
Hundreds of old automotive adds, sales brochures, magazines, historic articles, oddities, etc.  
Unique automobile accessories, shop decorations, cans, tools, etc.  
Automobile-theme display items, clocks, knick-knacks  
All stuff needs a new home - Would be happy to show you - please call for appointment. Frank @ 208-523-4218, 208-589-8218 (Idaho Falls) or mfradburn@al.com

**EASTERN IDAHO'S ACTIVITIES**

On September 10th 8 members of the Eastern Idaho Chapter met @ Mitchells Restaurant for breakfast prior to heading out to Market Lake for our 2nd and last cleanup for 2011.

The weather was very good, trash and water foul minimal and the cleanup was a great success. I was very disappointed in the turn out of E I members and the water foul this year. We must be in for a bad winter this fall & winter because they have seemed to headed south already.

Our thanks to those who did turn out they did a great job and the place looked mighty clean when we left.

Maybe we will have better luck next year!

While enjoying a colorful fall road trip around Palisades and Star Valley last Wednesday, Deb and I encountered some pure elegance on the road (see photos). A California car club was touring the Park, Jackson Hole and Driggs. Classic cars encountered included an Auburn convertible (~1933), Pierce-Arrow, several Packards (including the 1934 'Packard Twelve' with custom coachwork, shown), an early "woody", and not one but two classic Bugattis! Brian



## OTHER ARTICLES

I have had a problem with getting information from the E I members regarding activities either completed or in the future so they can be entered into this newsletter and then issue it on time. I do not attend all E I or Region Function as I used to, therefore it has become the task of chapter members who do attend them to furnish this information and pictures within a reasonable time for me to publish the newsletter. This is not happening!

As I have become an 82 year old and my computer is an XP pro which I do not plan on changing I feel it is time for someone else to provide the newsletter for this chapter.

Ray Born

**Would you like to receive this newsletter in Full Color?** If you have an "[E-Mail Address](#)" please send it to me and I will add you to the "Growing List" of satisfied colored N L recipients. With the US Postage going up each year this would help this chapter put this money to a better use.

*the Gasline*



*Eastern Idaho Chapter  
P. O. Box 2347  
Idaho Falls, ID 83403-2347*

*October 2011*



Place  
Stamp  
Here